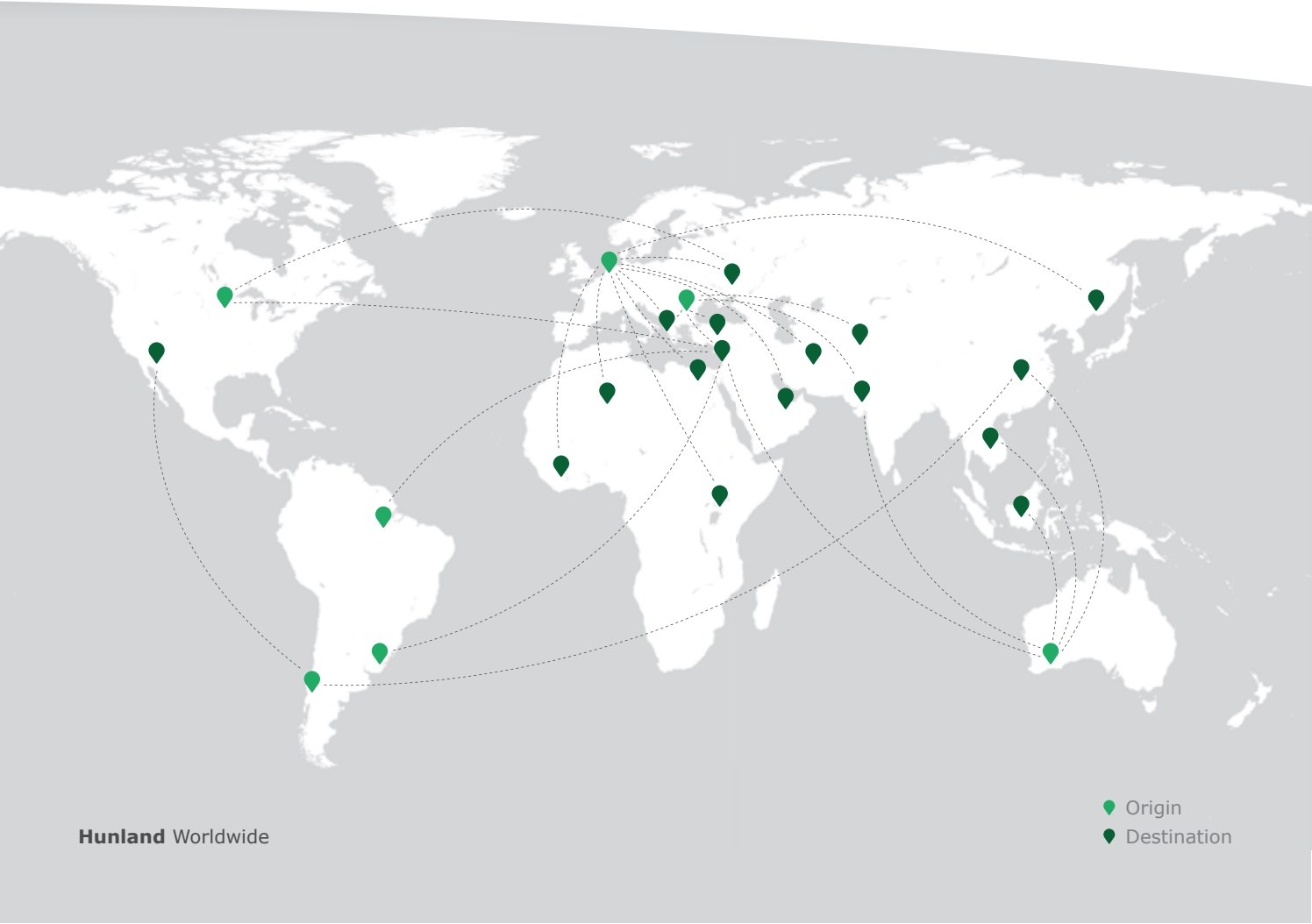





HUNLAND
Livestock & meat import/export

Hunland Worldwide

We are leaders in livestock import and export worldwide. With our international team of professionals we guarantee quality, service and reliability.



LIVESTOCK & MEAT

IMPORT / EXPORT



50.000
breeding cattle



350.000
slaughter cattle



200.000
sheep, lambs and goats

Exporting over 600 thousand animals each and every year

Multinational group of companies vertically integrated in a complete value chain of livestock production, trading, transportation and consulting.



HIGH QUALITY LIVESTOCK

[READ ALL ABOUT HUNLAND'S HIGH QUALITY LIVESTOCK](#)



Breeding cattle

Countries of origin

Some examples

The Netherlands

Hungary

Chile

Germany

Denmark

Austria

USA



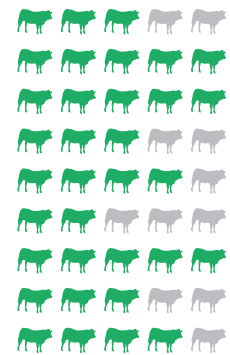
Breeding cattle

Hunland's main specialization is the trade of breeding cattle around the world. We pay special attention to our client's needs and requirements, and ensure a reliable supply of high quality breeding cattle from various breeds.

Our client oriented selection allows us to meet expectations of all buyers demands. A Global network of export facilities and continuous presence on the market have proved Hunland to be a reliable partner in the modern dairy industry.

The Holstein Friesian breed is the most common breed in modern milk production. It has a unique natural tendency to adapt and accommodate itself to different climates and geographical features. Furthermore it's strong and traceable genetics creates a solid basis for famers around the world to develop their own, local and highly productive Holstein Friesian herd.

Among popular breeding cattle types are also Simmental, Jersey, Montebeliarde and Brown Swiss.



- Simmental
- Limousine
- Charolais
- Hereford
- Angus
- Brahman
- Belgian Blue
- Holstein Friesian
- Crossbreed



Main breeds

In total exports

Slaughtering and fattening cattle

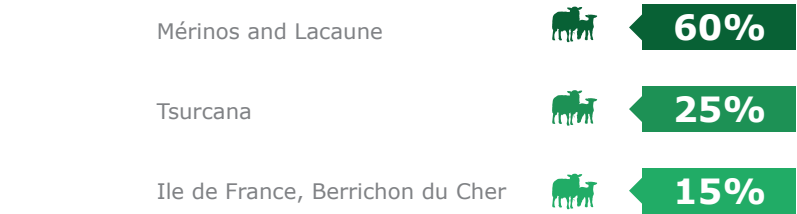


Beef cattle

We supply our clients with large quantities of livestock for fattening and slaughtering purposes. These are commercial livestock breeds well suited for industrial scale beef production, with high daily weight gains at fattening and high weight output at slaughtering.

Through our network of beef livestock experts in Europe and South America, we secure our clients with continuous quality beef cattle meeting all veterinary health status requirements of the importing countries.





Popular races

Percentage in total exports

Sheep and lambs



Sheep and lambs

We export 5 main breeds of sheep and lambs from several locations in Europe, to suit varying market requirements and demands.

Merino is a breed with excellent meat qualities, which makes it the most popular breed in the meat industry. We also offer our clients Merino sheep crossed with other breeds such as, Ile de France and Berrichon du Cher.

In addition, we export sheep that, serve for milk, meat and wool production. These include sheep from Lacaune breed, French native Racka and Tsigai breeds, and from Romania we export lambs of a native breed called Tsurcana.



Goats

Famous races

Average milk yield
per lactation

Saanen



1000 Liters

Malaguena



750 Liters

Murciano - Granadina



710 Liters



Goats

Hunland has developed in the new rapidly growing sector of the goat milk industry, and we are proud to offer our clients with the most famous goat races from registered herds with traceable genetic lines, originating from the Netherlands, Switzerland, France, Spain and other countries worldwide.

We select our goats based on a superior exterior type, high reproductive performance and high production capacity, fitting in efficient breeding program.



MODERN PRODUCTION AND PROCESSING

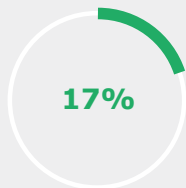
[READ ALL ABOUT HUNLAND'S MODERN FARMS](#)

High quality livestock feed

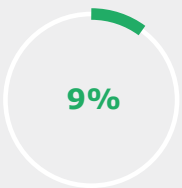
Hunland produces its own animal feed in order to ensure the best quality organic nutrition for livestock. We grow crops on our own fields around Europe, then formulate feed to provide protein, energy, minerals and vitamins to support growth, production, health and reproduction of cattle. Our expertise in raw materials and the understanding of nutrient animal needs,

enables us to produce safe and reliable custom made feed. This enables us to meet demands of every particular type of livestock to:

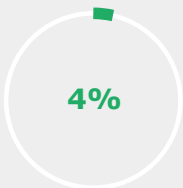
- Improve reproduction efficiency and calf health
- Maximize milk production
- Provide sustainable weight gain
- Support overall herd health.



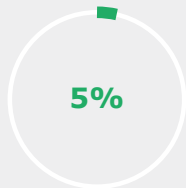
By products



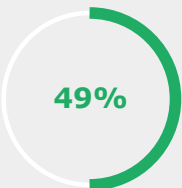
Wheat and barley



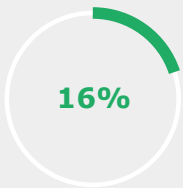
Minerals and vitamins



Straw/hay



Corn silage



Corn grain

Feed recipe for fattening bulls

Percentage in Total Mixed Ration



Crops and feed



Hunland dairy

A crucial part of the Hunland Group, is understanding our clients from inside of the dairy industry. We operate facilities of various scales, located in different countries of Europe, with main locations in Hungary

and Greece. All our dairy farms are equipped with modern milking systems and managed according to modern technologies and practices in the dairy industry.

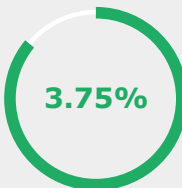
Average indicators



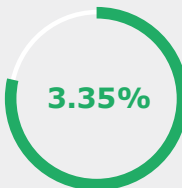
Per head per day



Per head per year



Fat content



Protein content



Dairy farms

4

Hunland dairies



Main milking breeds



Holstein Friesian heifers
Simmental heifers



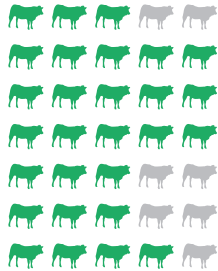
Beef farms

We are dedicated to growing livestock on our own farms, where our main concerns are consistent quality and animal care, following exceptional cattle management practices. Along with efficiency gains it allows us also to be environmentally sustainable, and to raise more beef using less resources.

Our cattle are selected from the best stock and can be traced to its origins. We raise it according to strict animal welfare protocols, using natural feed to ensure the best nutrition and ideal growth for the cattle on our farms.

Main breeds

On our beef farms



- Simmental
- Limousine
- Charolais
- Belgian Blue
- Holstein Friesian
- Angus
- Crossbreed



Beef farms





Meat

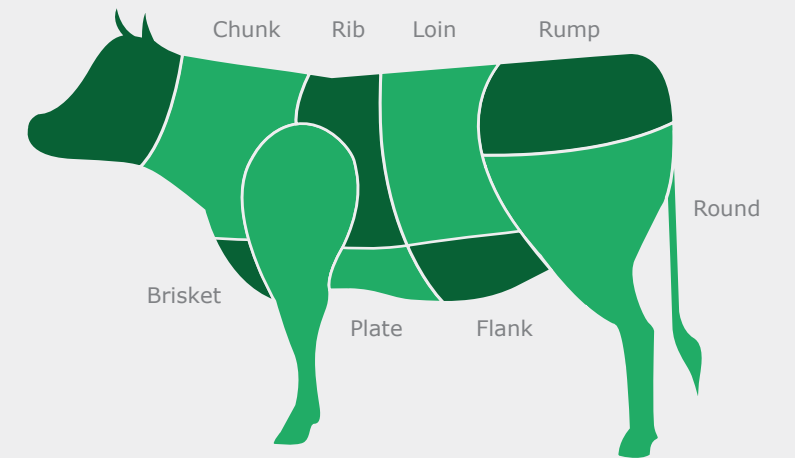


High quality meat

In cooperation with modern slaughterhouses in Central and Eastern Europe, we supply around 15.000 tons of beef and lamb meat per year. A strong focus on quality made Hunland a preferred supplier of the world's biggest meat processors, wholesalers and restaurant chains.

Hunland has also a big share in poultry trade, especially with the Hungarian poultry we have achieved worldwide a good reputation. We supply about 5.000 tons of fresh and frozen poultry per year, whereas turkey and water poultry are the most popular products.

Popular meat cuts



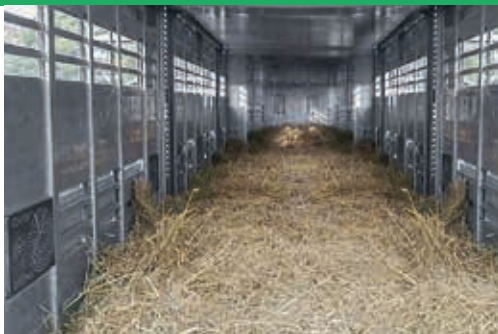
QUALITY DELIVERY BY HUNLAND

READ ALL ABOUT HUNLAND'S HIGH QUALITY TRANSPORTS



Land transportation

Average truck delivery time



Short haul
10 hours

Long haul
5 days

Transport by truck

Hunland controls quality of land transportation of livestock by using a dedicated fleet of 100 trucks. Our professional drivers ensure safe, prompt and high quality transit of livestock from loading place to final destination.

All our trucks meet highest environmental standards, keeping our CO2 footprint on a very low level.



Transport by vessel

Hunland also controls quality of maritime transportation of livestock by using a fleet of dedicated vessels. We provide high animal welfare on board through our team of professional stockmen and veterinarians sailing on the vessels, strict company's policies and high technical requirements to the vessels. Our own fleet includes 3 vessels of different capacity.

Average vessel delivery time

Short haul

5 days

Long haul

22 days

Maritime transportation





Air transportation

Average plane delivery time



Short haul

4 hours

Long haul

10 hours

Transport by plane

Hunland also provides its clients with quality transport by air, to any destination in the world. Working closely with qualified animal experts, flight attendants and selected airlines we ensure that air transportation of livestock is a quick and safe mode of delivery.

CONSULTING BY HUNLAND

[READ ALL ABOUT HUNLAND'S CONSULTING PARTNERS](#)



**Our partner
company**

FarmSolution



FarmSolution

Our International Training Center is developed in cooperation with FarmSolution Kft. With its main location at the Hunland Dairy farm in Hungary, our team of professionals provides theoretical and practical trainings in Hungary and the Netherlands, as well as at the farm facilities of our clients. In addition our team is ready to travel to provide clients with consultation and assistance in order to ease the adaptation of the imported livestock.

www.farmsolution.hu





Genetics

Our partner
company

Genetics

We select the very best genetics from the global Holstein industry of exclusive top pedigree heifers and bulls, through genomic testing we source embryos and flush available donors with a bull of your choice. As well we support our clients with training to implant embryos and consulting on related questions.

www.alh-genetics.nl

Access to the world's best high genomic cow-families in combination with properly selected elite proven dairy sires, allows us to improve the herd on our client's dairy farms by creating a uniform group of dairy heifers with high milk production and breeding characteristics.



Blueprint design



Completion

20%

75%

5%

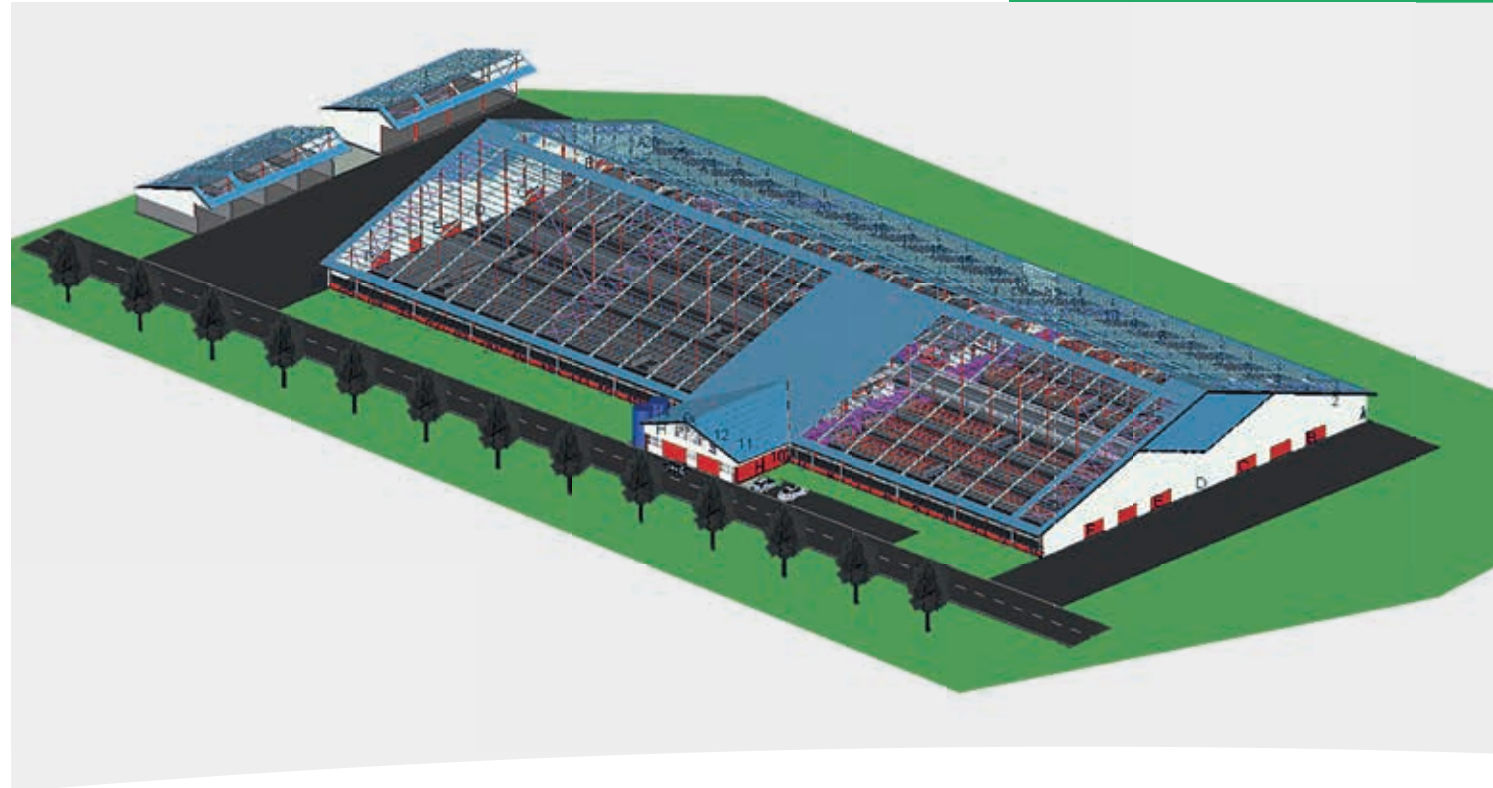


Building proces



Project Development Timeline

Turnkey projects



Turnkey projects

As part of our consulting services, we combine expertise in value chain creation in milk and meat production and hence we can offer our clients with turnkey project development. From the overall design of a project layout and feasibility study, through detailed design of a facility including required equipment, to realization and construction.

Together with FarmSolution we provide training of personal on the spot and assist with the final start-up of the realized project.



HUNLAND

OUR MAIN OFFICES

Ráda Puszta
2347 Bugyi
HUNGARY

T: +36 29 548 500

Ehringveld 5
7054 BP Westendorp
THE NETHERLANDS

T: +31 314 345 340